

TIVO UPGRADE INSTRUCTIONS

(c) 2001-2005, weaKnees. All rights reserved.

Humax DRT400/800 / Toshiba RS-TX20 / Toshiba RS-TX60

TiVo DVR / DVD Recorder Upgrade Instructions

These instructions are also available in COLOR at http://www.weaknees.com/upgrade_instructions.php

WORDS OF CAUTION:

First and foremost, please be aware that upgrading a TiVo presents a few physical hazards. As with most consumer electronics devices, components in the TiVo may still carry a lethal charge, even after disconnecting from your power supply. Be aware of this while working inside your TiVo. Allow sufficient time for discharging of components and avoid contact as much as possible with potential hazards. While we have done everything we can to provide accurate, easy-to-follow instructions, we cannot be responsible for any damage done to your TiVo or to yourself as a result of your upgrade. By opening your TiVo, you agree that neither weaKnees nor any of its shareholders, directors, officers members or affiliates is responsible in any way for any harm done. Please be VERY careful when upgrading. NEVER open the TiVo while the unit is plugged in and NEVER operate the TiVo if the lid is not securely fastened.

Please Note: Opening the TiVo voids the warranty.

This Kit Includes:

- (1) Upgrade hard drive
- (1) Set of upgrade instructions
- (1) T10 Torx tool
- (1) T15 Torx tool

1. PREPARE FOR THE UPGRADE

Before you remove the cables from the back of your TiVo, you may want to label each cable so that you'll know exactly how to re-attach your TiVo when you are finished with your upgrade.

Figure 1 shows the back of the TiVo, without any cables attached.



Figure 1 (Back view)

2. OPEN THE TIVO

After unplugging the power cord from the TiVo, wait five minutes for the TiVo to discharge. Do not plug the TiVo back in until you are completely finished. Do not perform this upgrade on carpet, and be careful of static electricity.

Using the Torx T-10 tool (the smaller of the two) included with your kit, remove the six (6) screws that hold the lid to the TiVo. These screws are identified in Figure 2. Set these 6 screws aside. You may wish to label them so that you do not confuse them with the screws you will remove from inside the TiVo.



Once these screws have been removed, you will be able to remove the lid. To do this, first slide the lid toward the back of the unit until it stops. (Figure 3 shows the TiVo at this stage—with a slight gap between the front of the TiVo and the lid.) Next, situate yourself at the back of the TiVo. Reach under the two sides of the TiVo and pull each side out slightly. At the same time, slide the lid toward the back of the unit and then up and off.

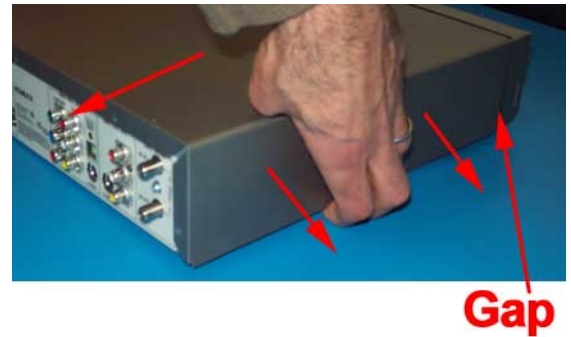


Figure 3 (Back side view)

3. DISCONNECT THE CABLES

With the cover off, you will be able to see (among other things) one hard drive, a ribbon cable that runs to the hard drive and a power cable that runs to the hard drive. You will also see an IDE cable and power cable that are plugged into the DVD recorder. (The DVD's IDE cable and power cable are closer to the center of the unit.)

Gently remove the IDE cable from the back of the hard drive.

NOTE: If the IDE cable is a bit sticky, be patient and grasp the cable from the plastic connector and gently pull it out from each edge until it comes loose.

The hard drive also has a power connector running into it. Remove the power connector from the hard drive. The power cables are sometimes difficult to remove; patience and wiggling back and forth usually does the trick.

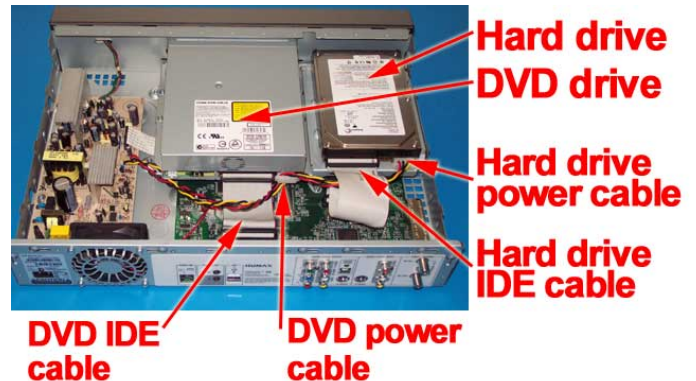


Figure 4 (Back top view)

4. REMOVE THE EXISTING DRIVE AND BRACKET

Using the Torx T-10 tool included with your kit, unscrew the four screws holding the TiVo hard drive bracket in place. Two of these screws are located near the side edge of the TiVo. The other two are screwed into the bottom of the TiVo—one is near the hard drive IDE cable; the other is close to the front of the unit. See Figure 4.

Once the screws are removed, lift the hard drive and bracket out of the TiVo. Remember how your TiVo bracket was installed in the TiVo, because you will be putting the bracket back in the TiVo later.

Do not confuse these screws with the lid screws you removed previously.

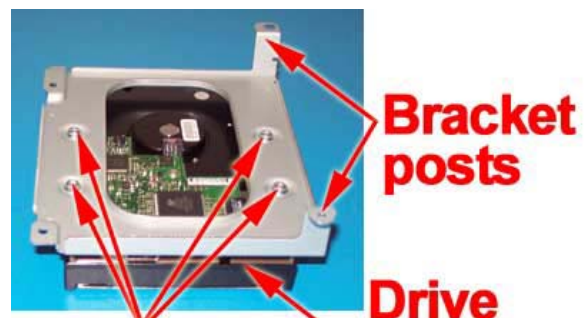


Figure 5 (Back right view)

5. CHANGE DRIVES

Turn the drive/bracket over. Note the orientation of the bracket on the drive—especially the bracket posts and the hard drive IDE and power connectors. (You will be installing your new drive in the same location on the bracket.) If you are looking at the IDE and power connectors with the drive upside-down, the bracket posts will be on the right. See Figure 6, which shows this view.

Using the Torx T-15 tool (the larger of the two tools included with your kit), unscrew the four drive screws connecting the hard drive to the bracket. Do not confuse these screws with the lid screws or drive bracket screws you removed previously.



Align the bracket and screws to your new hard drive as shown in the picture. Secure the new hard drive to the TiVo bracket using the four screws you just removed.

Now, turn the bracket/drive over and install it back into your TiVo. The drive IDE and power connectors will face toward the back of the TiVo and the two bracket posts will sit closer to the DVD recorder.

Screw the bracket back into the TiVo using the four screws that you previously removed.

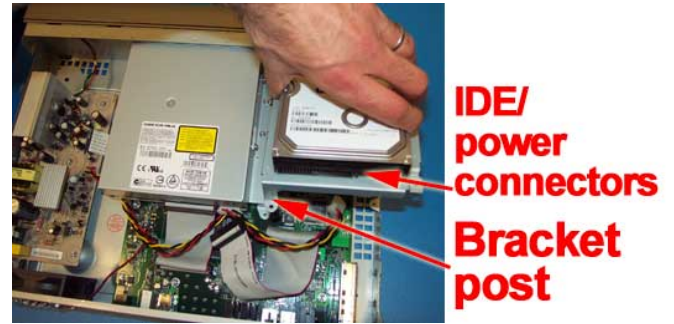


Figure 7 (Top back view)

6. CONNECT THE POWER AND HARD DRIVE CABLES TO THE DRIVE

Once the drive/bracket is re-installed, connect the power cable to the drive. Be sure to push on the cable with some force to be sure that it is seated properly. The power cable connects to the drive with the flat-side down (rounded-side up).

Connect the IDE cable to the hard drive. Again, be sure the cable is pushed snugly into the drive. The notch in the cable should face up. See Figure 8. Be very careful not to bend any of the hard drive pins.



Figure 8

7. RE-ATTACH THE TIVO LID

Place the lid on top of the TiVo with the screwholes in the lid toward the back of the unit. Leave a gap of about one inch between the front of the TiVo and the lid. See Figure 9. Once the lid is in place, push it toward the front of the TiVo until it is flush with the front of the TiVo.

Once the lid is in place, screw the six lid screws into the back of the TiVo.

Once all of the screws are in place, reinstall your TiVo and power it on. Once you have gone through the Guided Setup process, you will be able to verify the capacity of your unit in the System Information screen.

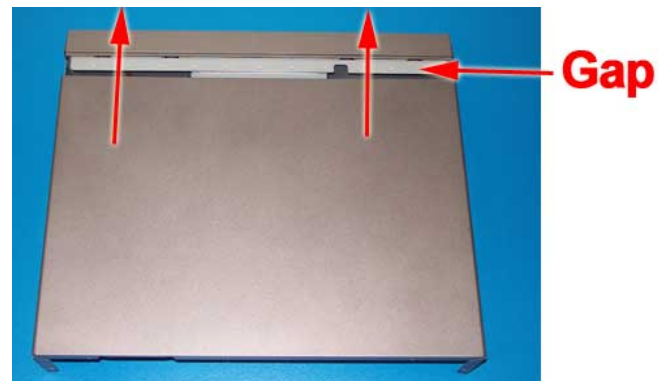


Figure 9

ENJOY! We thank you very much for your purchase and hope that you enjoy your newly-upgraded TiVo. Please email us with any comments, suggestions or complaints. If you found the upgrade easy to install (or even if you found it more difficult than you expected), we'd like to know. If you found our service to be excellent (or awful), we want to know that too. We're always looking to improve our products and services...the more we hear from you, the better. Thanks very much!